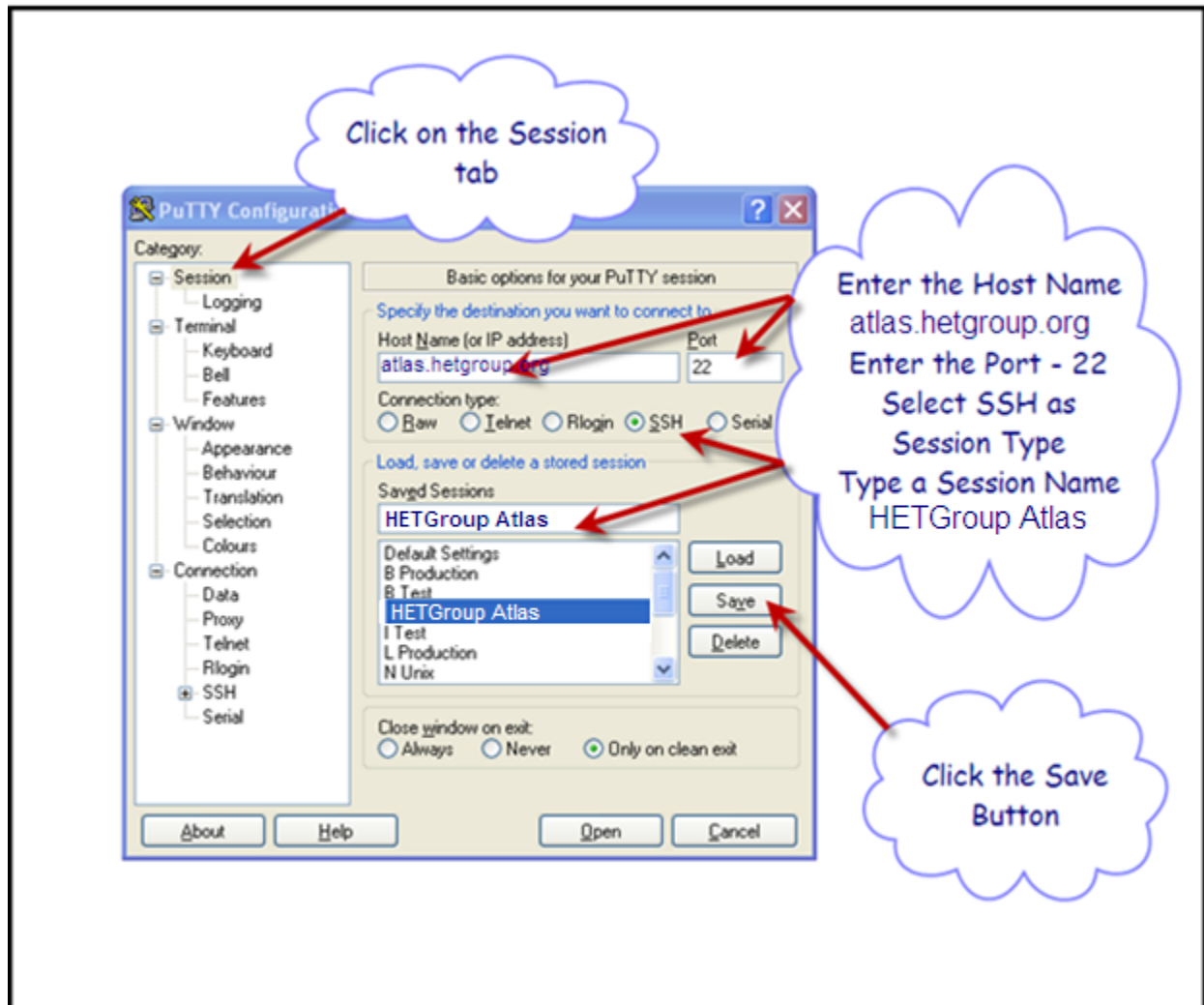


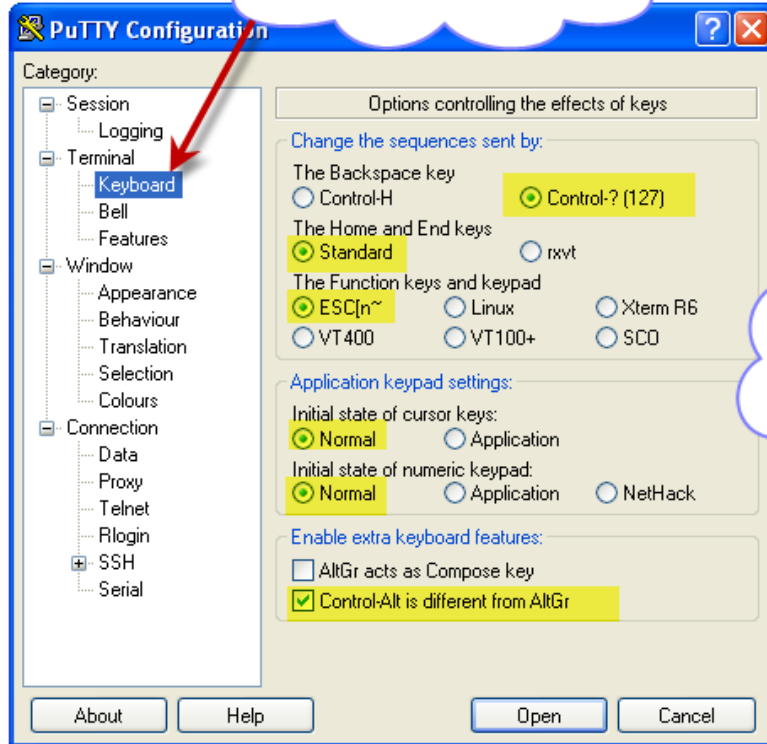
Putty Configuration

The Putty Emulator is open source software and can be downloaded from www.putty.org

The following are screen shots of setup required to access atlas.hetgroup.org

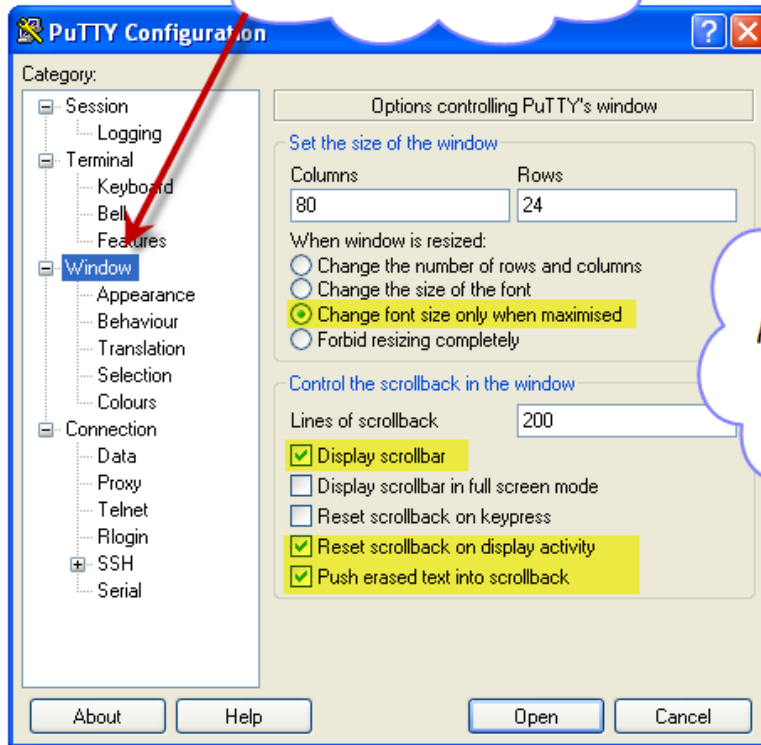


Click on the Keyboard tab



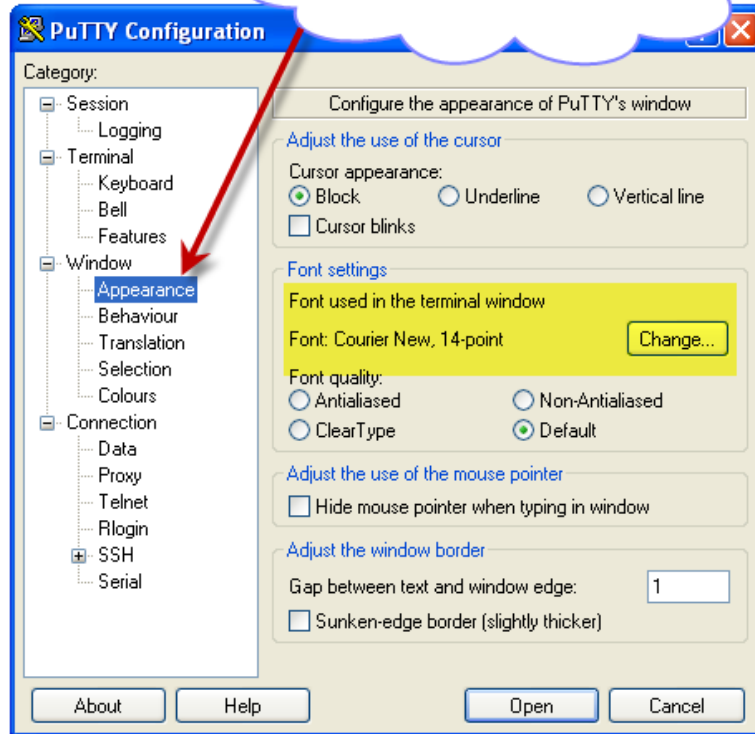
Select the highlighted radio buttons.

Select the Window tab

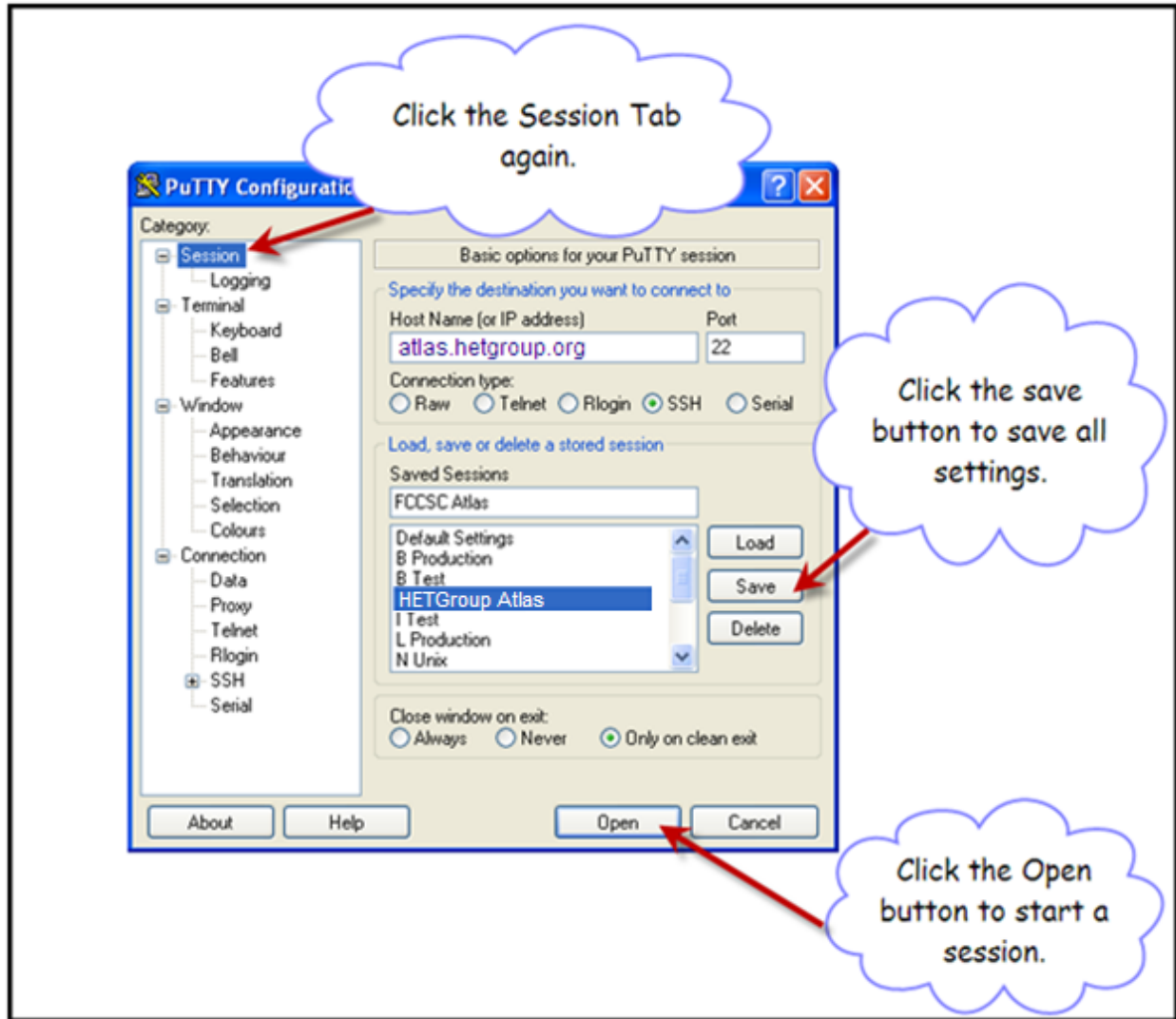


Make the highlighted selections.

Select the Appearance tab



Make the Font
Courier New, 14
points



After clicking the Open Button, the Putty emulator session will be started.

Double click on the blue window bar to Open Putty in a full screen.

Enter your userid and password to log in to the HETGroup Development machine.